

# Quick Installation Guide

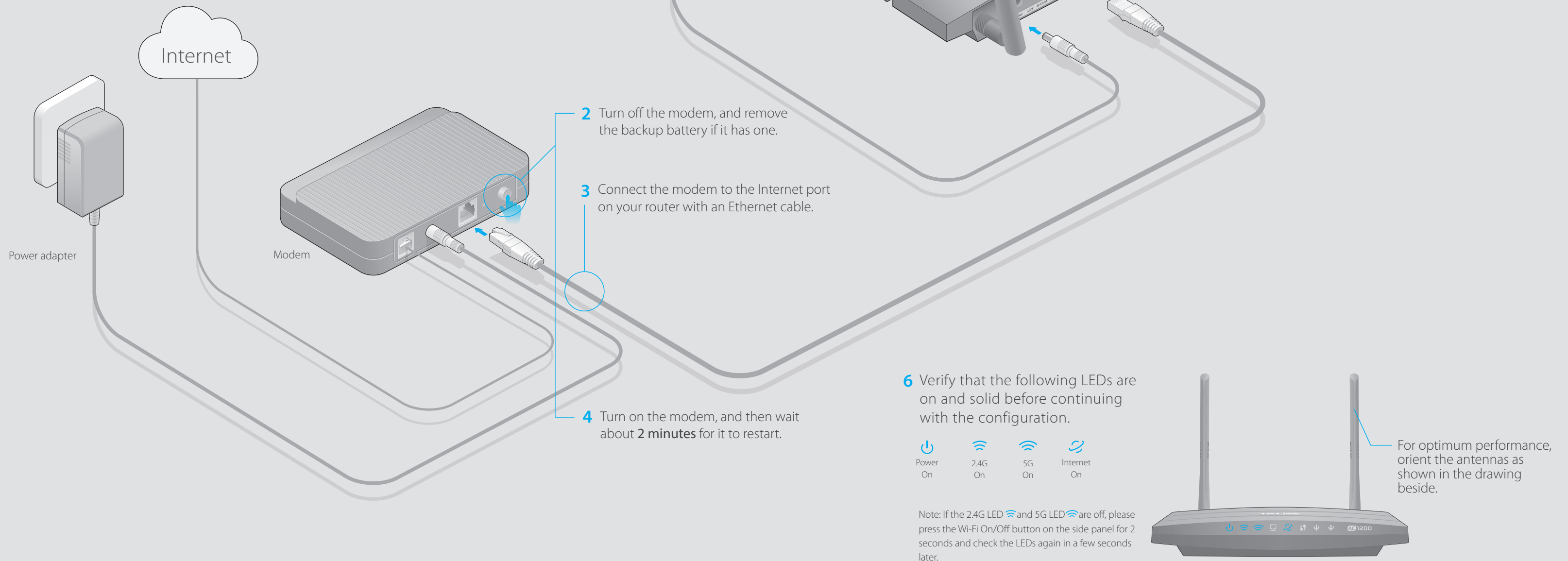
AC1200 Wireless Dual Band Gigabit Router

Archer C5

7106506181 REV1.0.0

## Connect the Hardware

If your Internet connection is through an Ethernet cable from the wall instead of through a DSL / Cable / Satellite modem, connect the Ethernet cable directly to the router's Internet port, then follow steps 5 and 6 to complete the hardware connection.

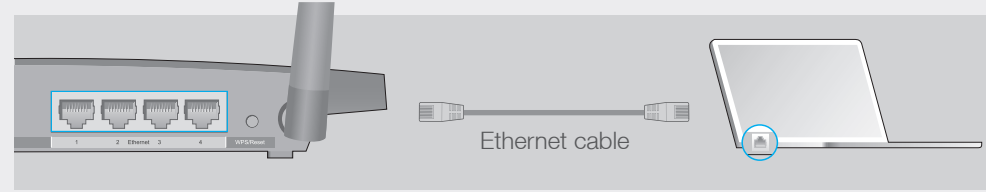


# Configure via Web Browser

## 1. Connect your computer to the router (Wired or Wireless)

### Wired

Turn off the Wi-Fi on your computer and connect the devices as shown below.



### Wireless

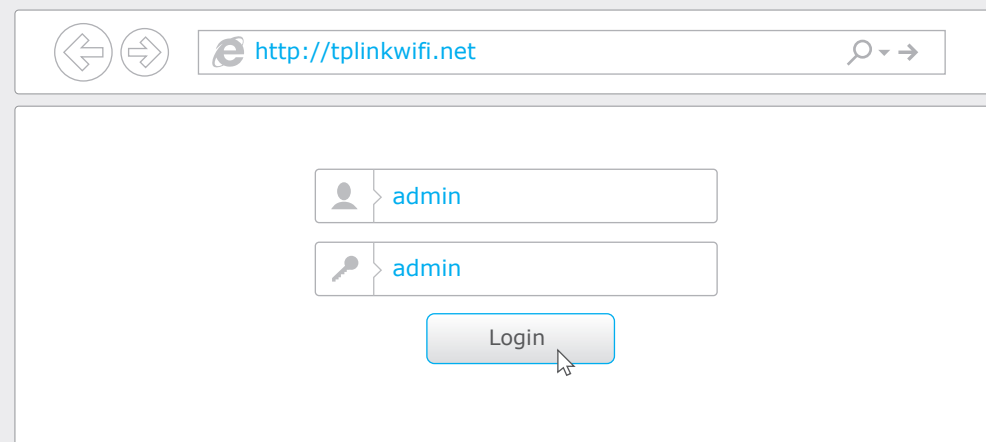
Connect wirelessly by using the SSID (Network Name) and Wireless Password/PIN printed on the product label at the bottom of the router.



## 2. Configure the router using a web browser

**A** Enter <http://tplinkwifi.net> or <http://192.168.0.1> in the address bar of a web browser. Use **admin** for both username and password, and then click **Login**.

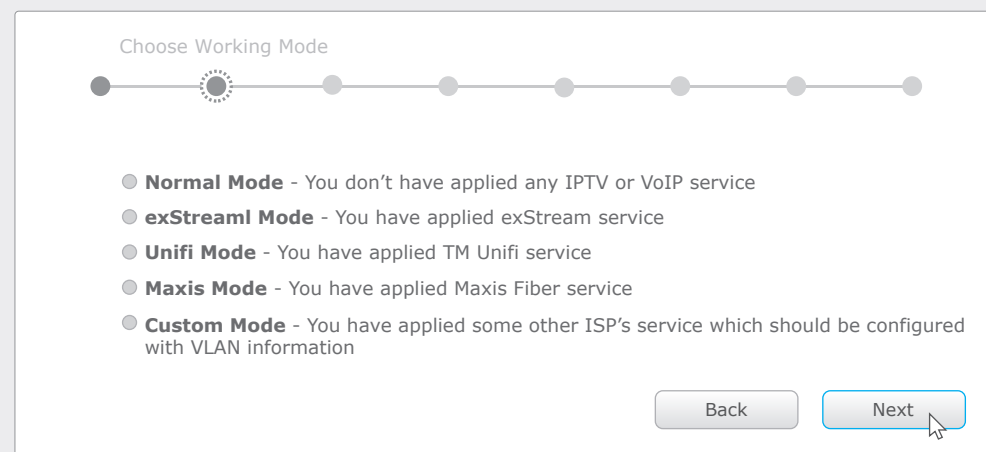
Note: If the login window does not appear, please refer to FAQ > Q1.



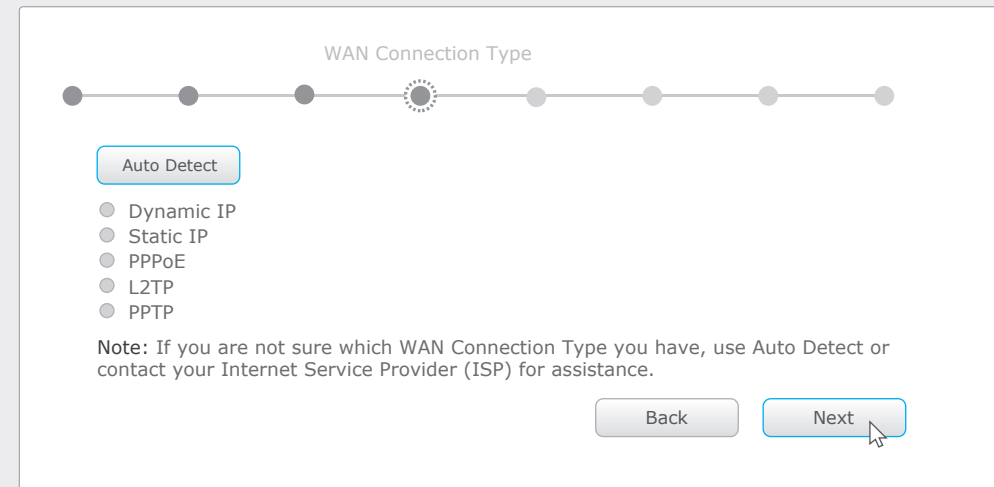
**B** Follow the step-by-step instructions of the Quick Setup to complete the initial configuration.

### Notes

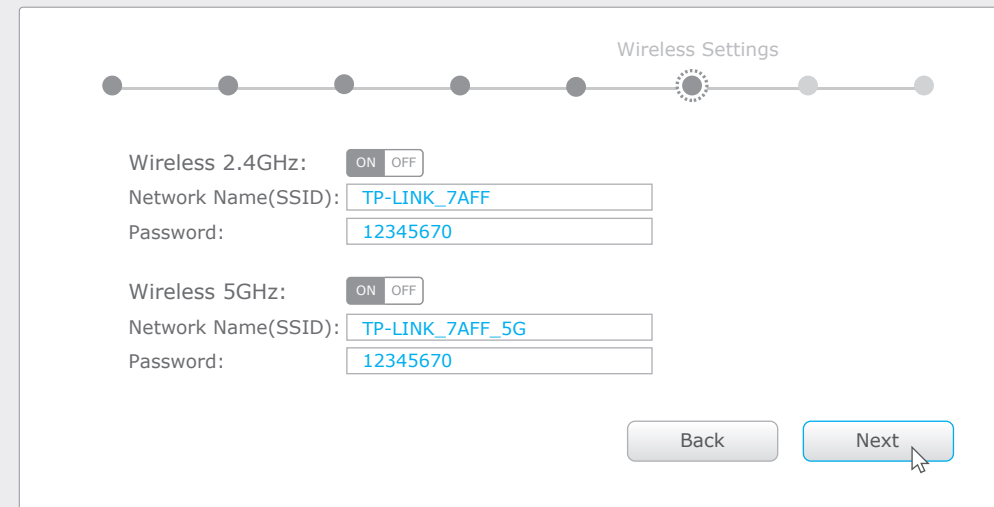
1. For IPTV/VoIP users, please select your connection type and proceed with the setup; for others, please choose **Normal Mode** and then the WAN connection type. If you are not sure, please contact your ISP.



2. For users that do not use IPTV/VoIP service, please click **Auto-Detect** if you are not sure of the WAN connection type, then click **Next** to proceed with the setup.

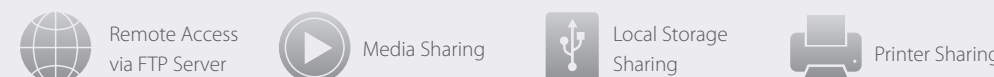
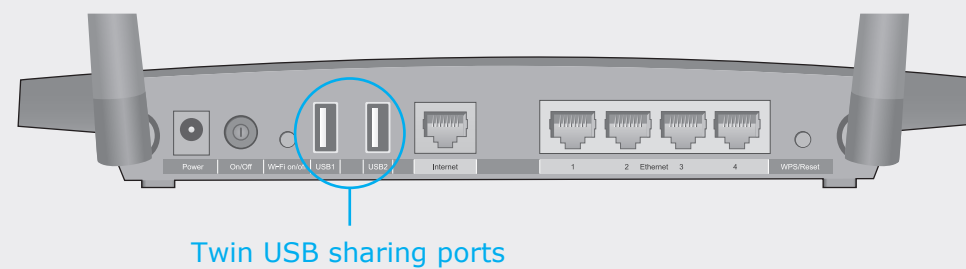


3. You are recommended to change the default wireless network names and passwords. Once done, you have to reconnect to your Wi-Fi network using the new wireless network name and password.



## USB Features

Use the USB ports for media sharing, storage sharing and printer sharing across your local network. You can also set up an FTP server to access your files remotely through the Internet.



Note: To learn more about the USB features, visit <http://www.tp-link.com/app/usb>, or simply scan the QR code using your mobile devices.



# Configure via Tether App

TP-LINK's Tether app lets you conveniently access the router and:

- View information about the clients on your network.
- Block network access from specific users or devices.
- Set up Parental Controls with access time and content restrictions.
- Change the basic wireless network settings easily.

## How to start?

- 1 Scan the QR code to download the TP-LINK Tether app from the Apple App Store or Google Play.
- 2 Ensure your smart device is wirelessly connected to the home network.
- 3 Launch the Tether app and start managing your home network.



## FAQ (Frequently Asked Questions)

### Q1. What can I do if the login window does not appear?

- If the computer is set to a static or fixed IP address, change the setting to obtain an IP address automatically.
- Verify if <http://tplinkwifi.net> or <http://192.168.0.1> is correctly entered in the web browser. Alternatively, enter <http://192.168.1.1> in the web browser.
- Use another web browser and try again.
- Reboot your router and try again.
- Disable and enable the the network adapter in use again.

### Q2. What can I do if I cannot access the Internet?

- Check if the Internet is working properly by connecting a computer directly to the modem via an Ethernet. If it is not, contact your Internet Service Provider.
- Open a web browser, enter <http://tplinkwifi.net> or <http://192.168.0.1> and run the setup again.
- Reboot your router and try again.
- For cable modem users, reboot the modem first. If the problem still exists, log in to the Web Management page of the router, and go to **Advanced > Network > Internet > MAC Clone**, click **Clone MAC Address** and then click **Save**.

### Q3. How do I restore the router to its factory default settings?

- While the router is powered on, press and hold the **Reset** button on the back until the LED blinks.
- Log in to the Web Management page of the router, and go to **Advanced > System Tools > Factory Defaults**, click **Restore**. The router will restore and reboot automatically.

### Q4. What can I do if I forgot my Web Management password?

- Refer to FAQ > Q3 to reset the router, and then use the default **admin** (all lowercase) for both username and password to log in.

### Q5. What can I do if I forgot my wireless network password?

- If you have not changed the default Wireless Password, it can be found on the product label of the router.
- Log in to the Web Management page, go to **Basic > Wireless** to retrieve or reset your wireless password.